

AURIGA HP



UPS SERIES

POWER YOU CAN RELAY-ON

CLASSIFICATION: VFI-SS-111 (EN 62040-3)
POWER RANGE: 120—200 kVA
No. OF PHASES: 3:3

012001—ISO9001 AU6080100

AURIGA HP

UPS MODEL: AURIGA HP
 CLASSIFICATION: VFI-SS-111 (EN 62040-3)
 POWER RANGE: 120 – 200 kVA
 No. OF PHASES: 3:3



AURIGA HP UPS combines **reliability, innovation, and performance** with reduced OPEX. **The only liquid cooled UPS on the market!** This 5th generation UPS guarantees the **lowest OPEX**, thanks also to solar integration and EnerClever functionality.

Designed for durability, AURIGA HP ensures top-level performance at optimal costs in every demanding environments.

100% made in Italy

TYPICAL APPLICATIONS:

Medical centers	IT networks	Enterprise servers
Telecommunications	Industrial processes	Datacenter

SPECIAL APPLICATIONS:

Hybrid UPS	Energy Manager
EN-50171 (Central Power Supply Systems (CPSS))	



SPECIFICATION

The **AURIGA HP series** by Powertronix represents the **market peak in performance and reduced running costs**, with a strong emphasis on **environmental sustainability**. These products are meticulously designed for demanding, mission-critical environments, consistently proving their efficiency and stability. The AURIGA HP family has continually met the needs of critical sectors, delivering durable and reliable performance. Powertronix's AURIGA HP enables **unprecedented savings** on the overall running costs of your **emergency power supply system** by remotizing UPS's heat dissipation.

AURIGA HP

TECHNICAL SPECIFICATIONS:

UPS MODEL
AURIGA HP

REFERENCE	AURIGA 120	AURIGA 160	AURIGA 200
GENERAL DATA	120 kVA	160 kVA	200 kVA
OUTPUT POWER MAX.	108 KW	144 KW	180 KW
OUTPUT POWER FACTOR	0.9		
UPS TYPE	Tower		
UPS TOPOLOGY	VFI On-Line double conversion, with pure sine-wave output		
CONVERTER/INVERTER	PFC and INVERTER based on IGBT, high frequency, TRAFOLESS		
STATIC SWITCH	Electronic + Contactors		
COOLING SYSTEM	LIQUID COOLED(W/optional remotizable radiators) + AIR COOLED with adaptive fan speed		
UPS PART NUMBER	AU120-000	AU160-000	AU200-000
INPUT			
INPUT NOMINAL VOLTAGE	3P+N 380/400/415VAC		
INPUT VOLTAGE TOLERANCE	304÷498VAC 100% load - Factory setting ±20% nominal voltage		
INPUT NOMINAL FREQUENCY	50/60Hz		
INPUT FREQUENCY TOLERANCE	40 ÷ 70 Hz		
INPUT POWER FACTOR	0.99		
MAX ABSORBED CURRENT	3PH+N @ 400V 195A	260A	325A
INPUT THDI	<3%		
OUTPUT			
INPUT NOMINAL VOLTAGE	3P+N 380/400/415VAC		
INPUT VOLTAGE TOLERANCE	0.9		
INPUT NOMINAL FREQUENCY	< 2% with linear load & < 4% with non linear load		
INPUT FREQUENCY TOLERANCE	125% for 10 minutes - 150% for 10 seconds		
INPUT POWER FACTOR	50/60Hz ±0.1% stability		
MAX ABSORBED CURRENT	Available , 30 Seconds (factory selectable)		
BYPASS			
BYPASS V&F	3P+N 380/400/415VAC or 1P+N 220/230/240VAC - 50/60Hz		
BYPASS VOLTAGE TOLERANCE	±20% - Factory setting ±10%		
BYPASS ACCEPTED OVERLOAD	150% 30 min - 1000% 100ms		
MANUAL BYPASS	Available with mechanical security		
BATTERY			
BATTERY CONFIGURATION	720VDC x string / EXTERNAL ONLY		
BATTERY CHARGING, I&V*	Factory setting 0.1C / 13,5VDC/block		
	up to: 35A	45A	56A
BATTERY COMPATIBILITY	VRLA-AGM / VRLA-GEL / NiCd / Lithium / Others		
BATTERY MANAGEMENT	Auto Test/ Equalization / Smart-battery management Autonomy display in minutes/seconds or percentage Optional: temperature compensation w/ external sensor		

While every precaution has been taken to ensure accuracy and completeness herein, Powertronix assumes no responsibility, and disclaims all liability, for damages resulting from use of this information or for any errors or omissions. Specification subject to be changed without notice.

AURIGA HP

TECHNICAL SPECIFICATIONS:

UPS MODEL **AURIGA HP**

	AURIGA 120	AURIGA 160	AURIGA 200
ENVIRONMENT			
Dimension (dxwxh)	800x830x1800(h)mm - metal case - IP20 - complete with castors		
Weight (W/O Battery)	480Kg	540Kg	590Kg
Temperature & RH%	0÷40°C – RH% up to 95% non-condensing - 1.000m asl 1% derating every +100Mt up to 2000 asl		
Ext-interfaces	Standard: RS-232/RS485 + dry contacts +LED Status Display Optional: MODBUS / SNMP via external card; LCD Touch Display ; Remote panel		
STANDARDS			
European directives	LV 2014/35/EU Low Voltage Directive EMC 2014/30/EU Electromagnetic Compatibility Directive / CE marks		
Standards	RoHS Compliance; IEC EN 62040-3 (Voltage and Frequency Independent)VFI-SS-111		
Safety	IEC / EN 62040-1		
Electromagnetic compatibility (EMC)	IEC / EN 62040-2		
Performance	IEC / EN 62040-3		
Product certification	CE		
Protection rating	IP 20		
Manufacturing	ISO 9001:2015, ISO 14001:2015, OHSAS18001		

Rear view

- A FRONT ACCESS DOOR***
- B FRONT LCD PANEL***
- C EPO BUTTON***

- 1 CABLE ENTRY**
- 2 BATTERY CONNECTION**
- 3 INPUT SWITCH**
- 4 INPUT RESERVE SWITCH**
- 5 MANUAL BYPASS**
- 6 OUTPUT SWITCH**
- 7 MAINTENANCE AND CONTROL ACCESS PANEL**
- 8 RS-232/ RS485****
- 9 SMART SLOT****

* Accessible from the front
 ** Accessible from the Back



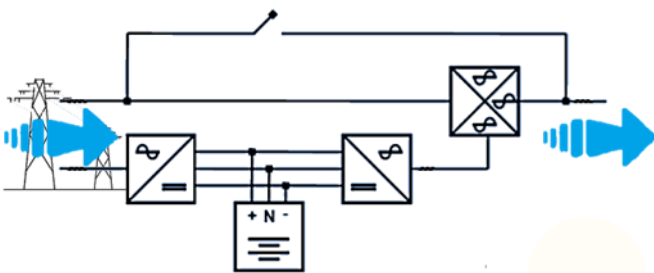
012001—ISO9001 AU6080100

AURIGA HP

+ UPS

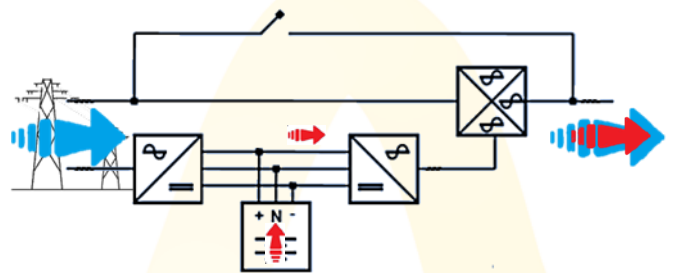
AURIGA operates as a standard UPS in Online Double Conversion or ECO mode. In **Online Double Conversion**, the UPS constantly converts AC to DC and back to AC, providing your load with **clean, stable power, free from spikes and fluctuations**—ideal for critical applications.

In **ECO mode**, the UPS powers the load directly from the mains when input power is stable, switching to battery only if an issue is detected.



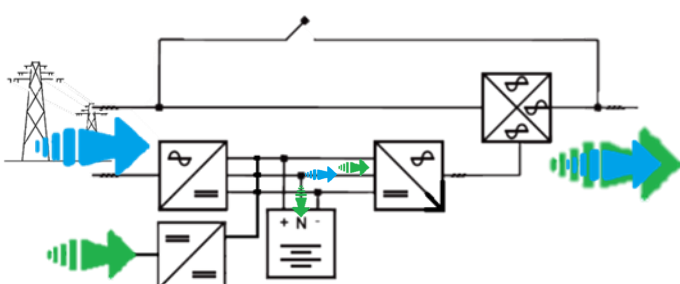
+ PEAK SHAVING

In addition to the standard mode, the AURIGA will use the batteries as an **“energy boost”**, meeting the **instantaneous energy demand** by drawing it from the battery instead of from the grid. This also allows the system to **output more energy than is being drawn from the grid**, thanks to the intrinsic intelligence in the control logic, special design considerations, and advanced firmware functionalities.



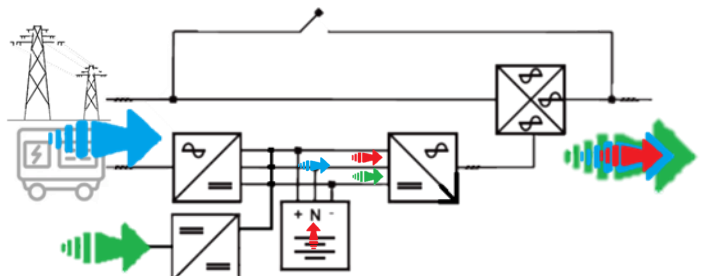
+ HYBRID UPS

In addition to the standard mode, the AURIGA can be **directly connected to PV panels** via Powertronix's SBC to **maximize energy efficiency**. Solar energy **will integrate with and reduce the grid power demand** based on the availability of PV energy. If properly sized, the system can potentially eliminate grid power consumption altogether, ensuring **maximum power supply efficiency and load protection**. Extra PV energy may also be used to charge the batteries.



+ ENERCLEVER UPS - AURIGA

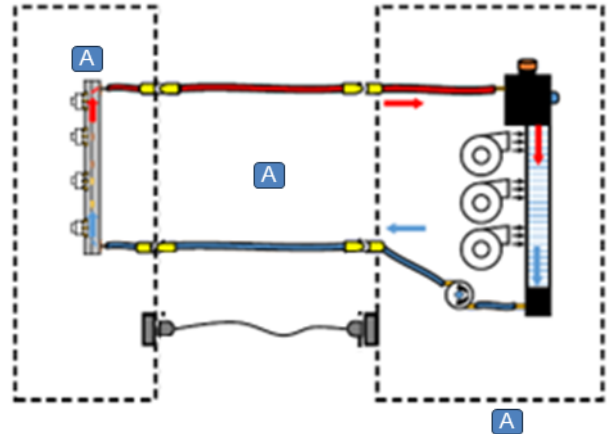
Enerclever functionality for AURIGA -from 30Kw-. The system will act as a **“SYSTEM ENERGY MANAGER,”** always giving the opportunity to switch seamlessly and use, among the available sources, the **most convenient energy**, while maintaining solid **continuity, stability and quality power provision** demands. It is also possible to combine EC UPS with Powertronix's specifically designed **Li-Ion based battery energy storage (BESS)**



AURIGA HP

+ H₂O COOLING BENEFITS

The Auriga HP liquid cooling system captures the heat generated by the double conversion process and allows it to be dissipated remotely, either in a separate room or outdoors. With the **optional OSDE1154 kit**, heat dissipation can be relocated up to **30 meters away** from the UPS installation site, **significantly reducing installation costs and cutting down energy consumption needed to maintain optimal temperatures in the UPS room**. This results in substantial **operational savings, maximizing the efficiency and cost-effectiveness of the system**



- A UPS's COLD PLATE**
- A CONTROL CABLES AND LIQUID PIPES**
- A EXTERNAL/ REMOTIZED HEAT-EXCHANGER**



AVERAGE SAVING ON A/C
 of approx. **250Mln BTU/y**

+ SNMP/TCP-IP



The AURIGA series offers the possibility to integrate the UPS into your **Local Area Network**, enabling remote monitoring and control of the UPS status. The **OX-MGTBX506/4 SNMP** card provides full control over thresholds, allowing **alarms to be triggered and notifications to be sent via email** to the entire team or selected personnel.

The freeware ViewPowerPro gives customers free access to a simple yet comprehensive monitoring tool

+ RELAY CARD

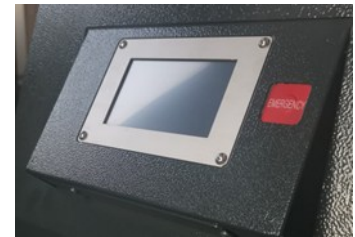


The AURIGA series **comes standard with CS0191** cards. Powertronix's exclusive CS0191 card design **ensures full integration** of the AURIGA series into your **Building Management System (BMS)** via RS232-RS485 com-protocols.

It supports five simultaneous active connections:

- Potential-free contacts (NO/NC)
- RS232 port with DB9 connector
- RS485 Modbus RTU
- rEPO (Remote Emergency Power Off)
- External Bypass AUX contact

+ HMI



The AURIGA series can be equipped as optional with a modern, functional, and user-friendly 5" **LCD touch screen display (OSDE1341)**. Additionally, with the **OSDE0124 remote panel**, control and monitoring of the UPS status can be **extended up to 100 meters**.

+ AURIGA ADDITIONAL OPTIONS

OSDE1232	Auriga 120÷200 parallel kit (up to 8 units)
OSDE1236	Auriga 120 built in backfeed protection
OSDE1237	Auriga 160 built in backfeed protection
OSDE1238	Auriga 200 built in backfeed protection
OSDE1154	Auriga 120÷200 remote heat-exchanger

OSDE1342	LCD Touch-screen Display for Auriga Family
OSDE0122	Auriga 120 2 nd independent output AS+EO
OSDE0129	Auriga 160 2 nd independent output AS+EO
OSDE0130	Auriga 200 2 nd independent output AS+EO

(emergency only)

POWERTRONIX

Secure Power

Innovation That Saves

For quick access to manuals, firmware, and software updates, please visit the official website or contact your local distributor.



Powertronix Srl

Corporation Stock euro 116.710 i.v.

Headquarters | Via Abruzzi 1,

20056 Grezzago MI Italy

+39 02 9096 8648

www.powertronix.it



KIAN FOR ENGINEERING AND TRADING

E-mail: info@kianeg.com

Mobile: +20 10 6059 7000

012001—ISO9001 AU6080100