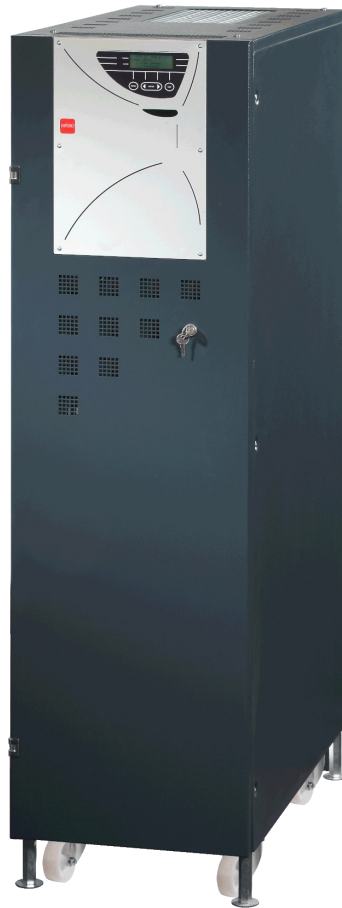


AURIGA



UPS SERIES

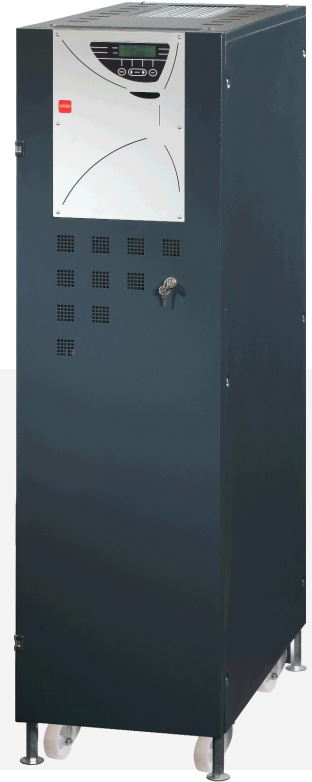
POWER YOU CAN RELAY-ON

CLASSIFICATION: VFI-SS-111 (EN 62040-3)
POWER RANGE: 60—100 kVA
No. OF PHASES: 3:1 * / 3:3
* Only for Auriga 60

012001—ISO9001 AU6080100

AURIGA

UPS MODEL: AURIGA
 CLASSIFICATION: VFI-SS-111 (EN 62040-3)
 POWER RANGE: 60 – 100 kVA
 No. OF PHASES: 3:1 * / 3:3
** Only for Auriga 60*



AURIGA UPS combines decades of reliability, innovation, and strength. Designed to lead the future market, this **5th generation UPS** offers top efficiency, Solar Energy Integration, and the **EnerClever** functionality. Built for durability, **AURIGA** ensures **continuous performance in demanding environments**
100% made in Italy

TYPICAL APPLICATIONS:

Medical centers	IT networks	Enterprise servers
Telecommunications	Industrial processes	Datacenter

SPECIAL APPLICATIONS:

Hybrid UPS	Energy Manager
EN-50171 (Central Power Supply Systems (CPSS))	

SPECIFICATION

The **AURIGA** series by Powertronix, with over 10 years of market presence, exemplifies **outstanding performance and reliability**, reflecting the company's vision for **emergency power supply solutions**. These products are specifically crafted for **demanding, mission-critical environments**, consistently proving their efficiency and stability. The **AURIGA family** has continually met the needs of critical sectors, **delivering durable and reliable performance**. Powertronix's commitment to innovation and quality shines through in this product line, earning it the **long-term trust of its customers**.

While every precaution has been taken to ensure accuracy and completeness herein, Powertronix assumes no responsibility, and disclaims all liability, for damages resulting from use of this information or for any errors or omissions. Specification subject to be changed without notice.

AURIGA

TECHNICAL SPECIFICATIONS:

UPS MODEL **AURIGA**

REFERENCE	AURIGA 60	AURIGA 80	AURIGA 100
GENERAL DATA	60 kVA	80 kVA	100 kVA
OUTPUT POWER MAX.	54 KW	72 KW	90 KW
OUTPUT POWER FACTOR	0.9		
UPS TYPE	Tower		
UPS TOPOLOGY	VFI On-Line double conversion, with pure sine-wave output		
CONVERTER/INVERTER	PFC and INVERTER based on IGBT, high frequency, TRAFOLESS		
STATIC SWITCH	Electronic + Contactors		
COOLING SYSTEM	Air Cooled with sturdy centrifugal fans		
UPS PART NUMBER	AU060-000	AU080-000	AU100-000
INPUT			
INPUT NOMINAL VOLTAGE	3P+N 380/400/415VAC		
INPUT VOLTAGE TOLERANCE	304÷498VAC 100% load - Factory setting ±20% nominal voltage		
INPUT NOMINAL FREQUENCY	50/60Hz		
INPUT FREQUENCY TOLERANCE	40 ÷ 70 Hz		
INPUT POWER FACTOR	0.99		
MAX ABSORBED CURRENT	3PH+N @ 400V 97,5A	130A	162,5A
INPUT THDI	<3%		
OUTPUT			
INPUT NOMINAL VOLTAGE	3P+N 380/400/415VAC or (AU060) 1P+N 220/230/240VAC		
INPUT VOLTAGE TOLERANCE	0.9		
INPUT NOMINAL FREQUENCY	< 2% with linear load & < 4% with non linear load		
INPUT FREQUENCY TOLERANCE	125% for 10 minutes - 150% for 10 seconds		
INPUT POWER FACTOR	50/60Hz ±0.1% stability		
MAX ABSORBED CURRENT	Available , 30 Seconds (factory selectable)		
BYPASS			
BYPASS V&F	3P+N 380/400/415VAC or 1P+N 220/230/240VAC - 50/60Hz		
BYPASS VOLTAGE TOLERANCE	±20% - Factory setting ±10%		
BYPASS ACCEPTED OVERLOAD	150% 30 min - 1000% 100ms		
MANUAL BYPASS	Available with mechanical security		
BATTERY			
BATTERY CONFIGURATION	720VDC x string / EXTERNAL ONLY		
BATTERY CHARGING, I&V*	Factory setting 0.1C / 13,5VDC/block		
	up to: 20A	30A	40A
BATTERY COMPATIBILITY	VRLA-AGM / VRLA-GEL / NiCd / Lithium / Others		
BATTERY MANAGEMENT	Auto Test/ Equalization / Smart-battery management		

AURIGA

TECHNICAL SPECIFICATIONS:

UPS MODEL **AURIGA**

REFERENCE	AURIGA 60	AURIGA 80	AURIGA 100
ENVIRONMENT			
Dimension (dxwxh)	410x830x1500(h)mm - metal case - IP20 - complete with castors		
Weight (W/O Battery)	240Kg	270Kg	290Kg
Temperature & RH%	0÷40°C – RH% up to 95% non-condensing - 1.000m asl 1% derating every +100Mt up to 2000 asl		
Ext-interfaces	Standard: RS-232/RS485 + dry contacts +LED Status Display Optional: MODBUS / SNMP via external card; LCD Touch Display ; Remote panel		
STANDARDS			
European directives	LV 2014/35/EU Low Voltage Directive EMC 2014/30/EU Electromagnetic Compatibility Directive / CE marks		
Standards	RoHS Compliance; IEC EN 62040-3 (Voltage and Frequency Independent)VFI-SS-111		
Safety	IEC / EN 62040-1		
Electromagnetic compatibility (EMC)	IEC / EN 62040-2		
Performance	IEC / EN 62040-3		
Product certification	CE		
Protection rating	IP 20		
Manufacturing	ISO 9001:2015, ISO 14001:2015, OHSAS18001		

Rear view

- A FRONT ACCESS DOOR***
- B FRONT LCD PANEL***
- C EPO BUTTON***

- 1 CABLE ENTRY**
- 2 BATTERY CONNECTION**
- 3 INPUT SWITCH**
- 4 INPUT RESERVE SWITCH**
- 5 MANUAL BYPASS**
- 6 OUTPUT SWITCH**
- 7 MAINTENANCE AND CONTROL ACCESS PANEL**
- 8 RS-232/ RS485****
- 9 SMART SLOT****

* Accessible from the front
** Accessible from the Back



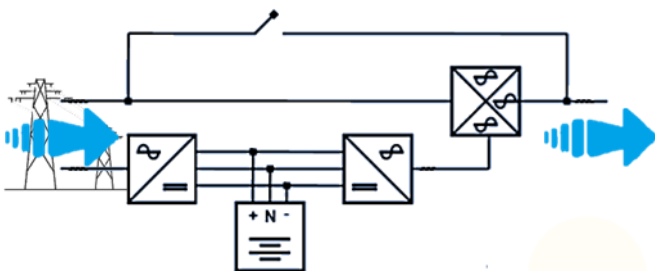
012001—ISO9001 AU6080100

AURIGA

+ UPS

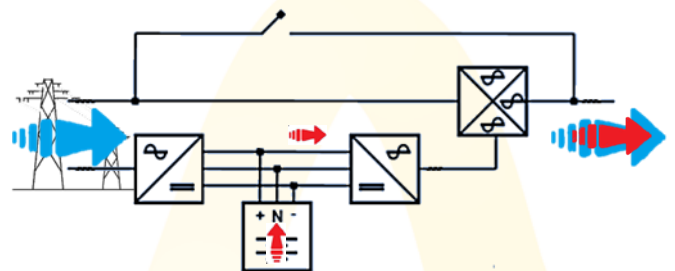
AURIGA operates as a standard UPS in Online Double Conversion or ECO mode. In **Online Double Conversion**, the UPS constantly converts AC to DC and back to AC, providing your load with **clean, stable power, free from spikes and fluctuations**—ideal for critical applications.

In **ECO mode**, the UPS powers the load directly from the mains when input power is stable, switching to battery only if an issue is detected.



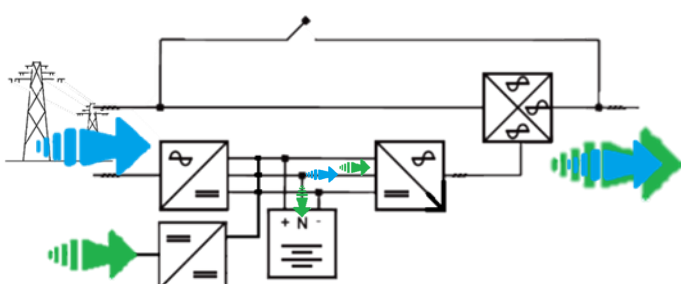
+ PEAK SHAVING

In addition to the standard mode, the AURIGA will use the batteries as an **“energy boost”**, meeting the **instantaneous energy demand** by drawing it from the battery instead of from the grid. This also allows the system to **output more energy than is being drawn from the grid**, thanks to the intrinsic intelligence in the control logic, special design considerations, and advanced firmware functionalities.



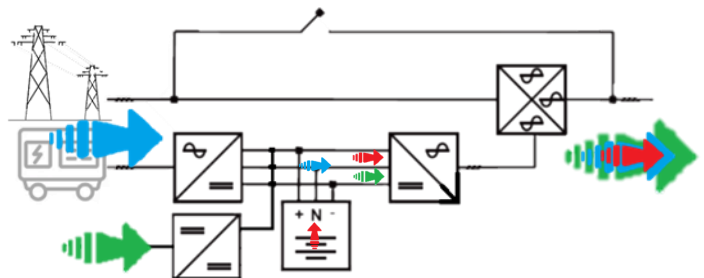
+ HYBRID UPS

In addition to the standard mode, the AURIGA can be **directly connected to PV panels** via Powertronix's SBC to **maximize energy efficiency**. Solar energy **will integrate with and reduce the grid power demand** based on the availability of PV energy. If properly sized, the system can potentially eliminate grid power consumption altogether, ensuring **maximum power supply efficiency and load protection**. Extra PV energy may also be used to charge the batteries.



+ ENERCLEVER UPS - AURIGA

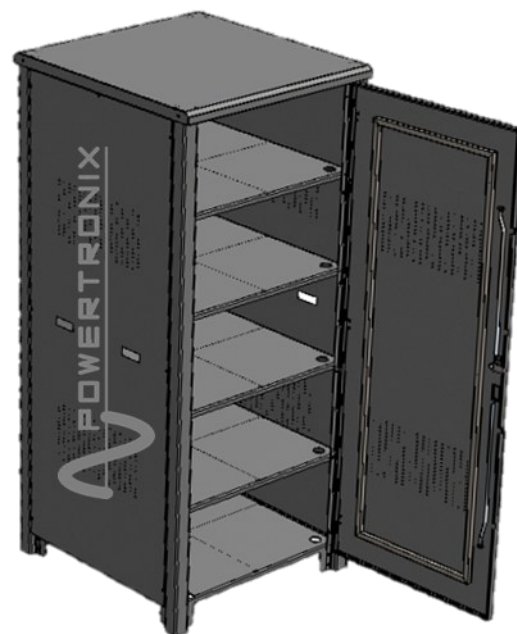
Enerclever functionality for AURIGA -from 30Kw-. The system will act as a **“SYSTEM ENERGY MANAGER,”** always giving the opportunity to switch seamlessly and use, among the available sources, the **most convenient energy**, while maintaining solid **continuity, stability and quality power provision** demands. It is also possible to combine EC UPS with Powertronix's specifically designed **Li-Ion based battery energy storage (BESS)**



AURIGA

+ BATTERY CABINET

The EN60-XXX battery cabinets by Powertronix are expertly designed to accommodate 60 battery blocks in a highly efficient and functional structure, maximizing space optimization while ensuring ease of access and superior functionality. The aesthetics of the EN60-XXX battery cabinets are delivering a **practical, solid and visually appealing solution.**



MODEL	MODEL	WEIGHT	CAPACITY
ENV8188140	810x880xh1400	200Kg	Up to 60x40Ah
ENV8198190	810x980xh1900	280Kg	Up to 60x100Ah
ENV12098190	1210x980xh1900	380Kg	Up to 60x120Ah

Customization is a core value of Powertronix's customer-focused approach. Alternative layouts and cabinet configurations can be tailored to meet specific space requirements and autonomy demands, ensuring maximum flexibility in both design and size

+SNMP/TCP-IP



The AURIGA series offers the possibility to integrate the UPS into your **Local Area Network**, enabling remote monitoring and control of the UPS status. The **0X-MGTBX506/4 SNMP** card provides full control over thresholds, allowing **alarms to be triggered and notifications to be sent via email** to the entire team or selected personnel.

The freeware ViewPowerPro gives customers free access to a simple yet comprehensive monitoring tool

+ RELAY CARD



The AURIGA series **comes standard with CS0191** cards. Powertronix's exclusive CS0191 card design **ensures full integration** of the AURIGA series into your **Building Management System (BMS)** via RS232-RS485 com-protocols.

It supports five simultaneous active connections:

- Potential-free contacts (NO/NC)
- RS232 port with DB9 connector
- RS485 Modbus RTU
- rEPO (Remote Emergency Power Off)
- External Bypass AUX contact

+ HMI



The AURIGA series can be equipped as optional with a modern, functional, and user-friendly 5" **LCD touch screen display (0SDE1341)**. Additionally, with the **0SDE0124 remote panel**, control and monitoring of the UPS status can be **extended up to 100 meters.**

+ AURIGA ADDITIONAL OPTIONS

- 0SDE1110** Auriga 60-80-100 parallel kit (up to 8 units)
- 0SDE1233** Auriga 60 built in backfeed protection
- 0SDE1234** Auriga 80 built in backfeed protection
- 0SDE1235** Auriga 100 built in backfeed protection

- 0SDE1342** LCD Touch-screen Display for Auriga Family
- 0SDE0115** Auriga 60 2nd independent output AS+EO
- 0SDE0116** Auriga 80 2nd independent output AS+EO
- 0SDE0120** Auriga 100 2nd independent output AS+EO

(emergency only)

POWERTRONIX

Secure Power

Innovation That Saves

For quick access to manuals, firmware, and software updates, please visit the official website or contact your local distributor.



Powertronix Srl

Corporation Stock euro 116.710 i.v.

Headquarters | Via Abruzzi 1,

20056 Grezzago MI Italy

+39 02 9096 8648

www.powertronix.it



KIAN FOR ENGINEERING AND TRADING

E-mail: info@kianeg.com

Mobile: +20 10 6059 7000

012001—ISO9001 AU6080100